

FIXING INSTRUCTIONS FOR

Multiflex Flexible Crash doors

PAIR OF DOORS

1. Check the opening sizes of the doorway against the drawing (not against the door as it has a certain amount of vertical adjustment).

2. Check that the door number, punched on the label or support plate, agrees with the number on drawing.

NOTE:—If there is any variation in sizes of the opening to those shown on the drawing, measure the door to check whether the adjustable bottom bearing will counteract any variation in the vertical size. If not, do not attempt to hang the door until either the opening or the door is corrected.

To assist the fixing, the spring units should be removed. Proceed as follows:

3. Take the tension off the spring units as explained on the drawing.

4. Withdraw spring units from tube. (Do not dismantle the spring units as incorrect assembly can cause mis-alignment.)

5. Mark a centre line across the underside of the head of the opening. On either side of this centre line mark off half the dimension shown as "C" to "C" Pivots on the drawing. These two points give the pivot centres of the doors.

6. From these two points mark out the shape of the top fixing plates from details on the drawing.

7. Mark fixing holes using the plates as a template, and drill for fixing (Concrete: 4—No. 12 woodscrews in rawlplugs. Metal: 4—No. M6×30mm MTS (CSK).

8. Fix plates with spring units and adjust them until the spring units are vertical (check with a level).
This is most important.

9. Drop a plumb line from the end of the spring units and mark the floor for positioning the pivots. Check "C to C pivots" dimension with the drawing.

10. Fit this bottom "Cone Plate" to the floor with fixings supplied. (Concrete: 2—No. M10×70mm Rawlshields and bolts).

11. Remove plates and spring units from the head and refit in the vertical tube. Make sure to return them to the same door leaves from which they were taken, (mismatching may cause mis-alignment).

12. Undo locking collar on adjustable pivot bearings, as explained on drawing, and screw bearings inwards.

13. Apply a smear of grease on to the cone pivot, place the doors with bearings on the pivots and position.

14. Turn pivot bearing to the left until the top fixing plate is almost touching the head.

15. Open doors and screw fixing plates in position.

16. Adjust height of doors to suit (do not allow it to bind) and screw up locking collars, taking care to engage key.

17. Apply tension to spring units as explained on drawing.

18. Check that the vertical tubes are true in both closed and open positions with spirit level.

19. Touch up the paintwork as necessary.

SINGLE DOOR

Proceed as above, but for Items (5) and (6) proceed as follows:—

5. Mark centre of fixing plate position 27mm from face of jamb.

NOTE: The panels can be cleaned by wiping them with soap and water. Rubber panels should be treated with a solution of 10% glycerine, 90% methylated spirit. Plastic panels can be treated with wax polish or anti-static polish.

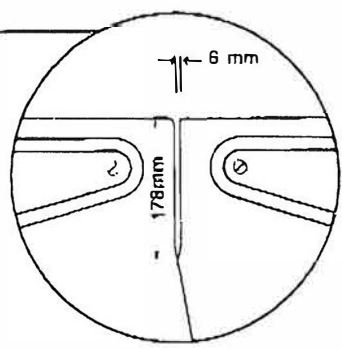
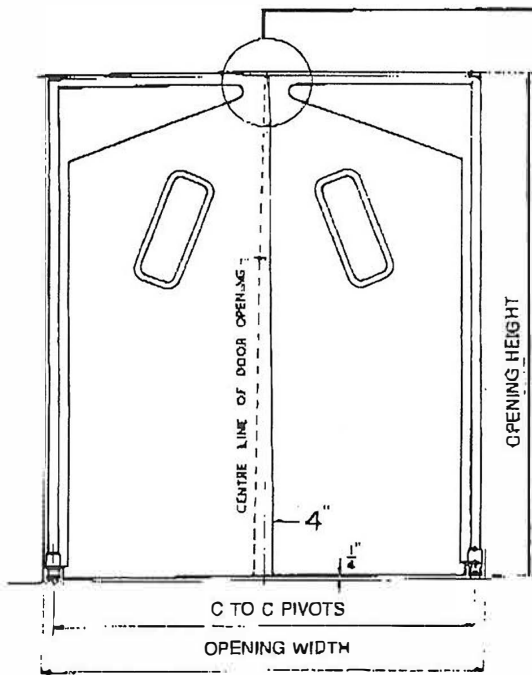
Oil the Spring units and grease the Bottom Bearing frequently.

**FLEXIBLE DOORS
FIXING DETAIL FOR
MULTIFLEX DOORS**

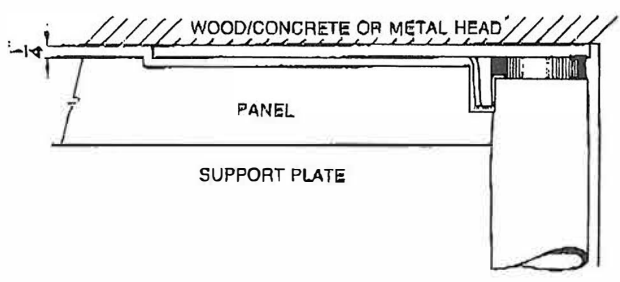
Registered Design: 885977
Patent: 726071

CUSTOMER
LOCATION
ORDER No.

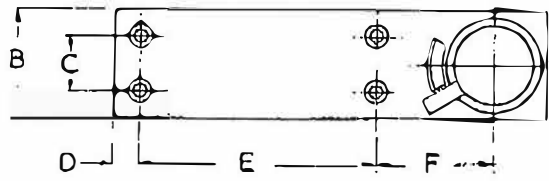
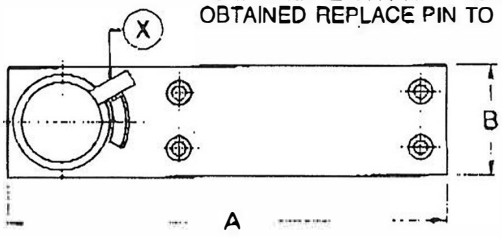
DOOR No.
PANEL
FINISH OF FRAMES



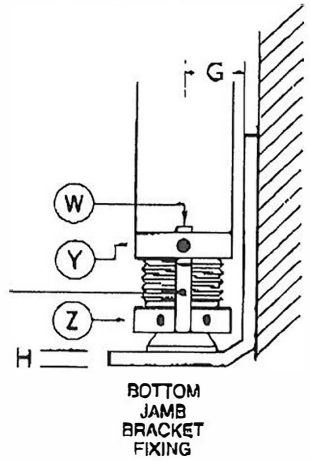
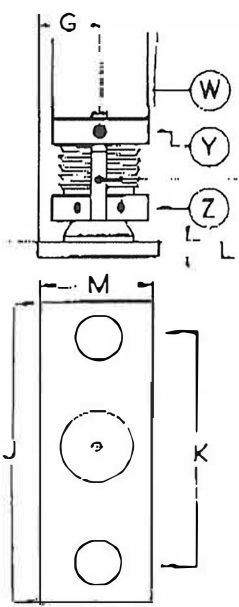
DETAILS OF OVERLAP FOR PVC CRASH DOORS
TO ENSURE SATISFACTORY WORKING OF PVC CRASH DOORS THERE MUST BE A GAP OF 6mm BETWEEN THE PANELS FOR THE TOP 178mm. BELOW 178mm THE NORMAL OVERLAP IS ADVISABLE. THE DOORS HAVE BEEN MANUFACTURED TO ALLOW FOR THIS. PLEASE CHECK DIMENSIONS ON FIXING.



SPRING TENSION ADJUSTMENT
INSERT TOMMY BAR IN ONE OF THE HOLES IN THE ADJUSTING COLLAR AND TURN SLIGHTLY TO THE LEFT TO REMOVE PIN "X". WITH THE USE OF TWO TOMMY BARS THE ADJUSTING COLLAR MAY NOW BE TURNED FURTHER LEFT TO INCREASE OR RIGHT TO DECREASE TENSION. WHEN DESIRED TENSION IS OBTAINED REPLACE PIN TO REGISTER AGAINST STOP.



HEIGHT ADJUSTMENT
ROTATE LOCKING COLLAR "Y" ANTI-CLOCKWISE TO WITHDRAW SQUARE LOCKING KEY "W" FROM SLOT. TURN COLLAR "Z" WITH A TOMMY BAR TO THE LEFT TO LIFT, OR RIGHT TO LOWER THE DOOR. ROTATE LOCKING COLLAR "Y" CLOCKWISE TO RE-ENGAGE SQUARE LOCKING KEY "W" IN SLOT.



	A	B	C	D	E	F	G	H	J	K	L	M
INCHES	7 ⁷ / ₈ "	2"	1"	1/2"	4 ³ / ₈ "	2 ¹ / ₈ "	1 ⁵ / ₈ "	1/4"	4"	2 ³ / ₄ "	3 ¹ / ₈ "	1 ⁹ / ₈ "
MILLIMETRES	200	50.8	25.4	12.7	111.0	53.9	23.8	6.35	102	70	5	40

CONCRETE
FIXING