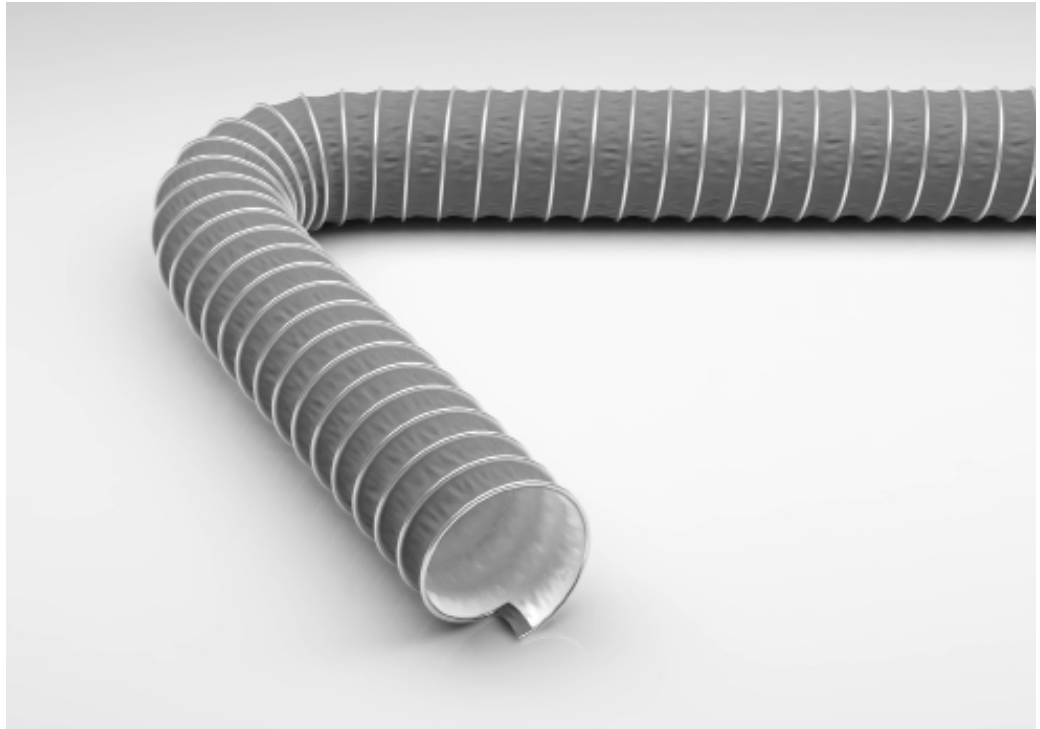


Master-Clip PTFE S

Suction & Blower Hose for
corrosive
media up to +250 °C



Material

clip profile spiral: hot-dip galvanised steel band
wall: inner PTFE foil, electroconductive, outer layer:
silicone-coated glass fabric

Applications

- Pharmaceutical industry
- Chemicals
- Low pressure range
- Suction and conveyance of aggressive media, explosive gases and fumes
- Paint mist extraction
- Paint, wood and paper industry
- Solvent extraction

Properties

- smallest bending radii
- highly flexible
- UV/ozone-proof
- excellent chemical resistance
- cold and heat-resistant
- weather-proof
- optimum medium flow characteristics
- outer chafing protection spiral
- high tension-proof connection of wall-lining and spiral via special clamp mechanism
- PTFE: no health risk
- extremely compressible to approx. 1:4
- robust outer wall material
- anti-adhesive internal wall lining material
- adheres to TRBS 2153 (Zone 1, 21) for non-flammable dusts and gases with low conductivity for dissipation of electrostatic charges with double-ended grounding of clips and gradient of < 30 mm (see chapter 17.10.5)

Temperature Range

- -70°C to +250°C
- peaks to +270°C

DN	op. pressure c. bar	vacuum c. mmWC	bend radius c. mm*	weight c. kg/m	article no.		
50	0,85	3520	30	0,5	252-050-116		
55	0,78	2920	33	0,5	252-055-116		
60	0,68	2450	36	0,6	252-060-116		
65	0,59	2090	39	0,7	252-065-116		
70	0,53	1760	42	0,7	252-070-116		
75	0,47	1540	45	0,8	252-075-116		
80	0,43	1380	48	0,8	252-080-116		
90	0,355	1100	54	0,9	252-090-116		
100	0,3	880	60	1	252-100-116		
110	0,258	730	66	1,1	252-110-116		
120	0,224	620	72	1,1	252-120-116		
125	0,21	550	75	1,2	252-125-116		
130	0,197	520	78	1,2	252-130-116		
140	0,175	460	84	1,3	252-140-116		
150	0,157	400	90	1,3	252-150-116		
160	0,14	350	96	1,3	252-160-116		
170	0,128	310	102	1,4	252-170-116		
175	0,123	290	105	1,4	252-175-116		
180	0,117	270	108	1,4	252-180-116		
200	0,099	220	120	1,6	252-200-116		
215	0,088	200	151	1,8	252-215-116		
225	0,082	180	158	2	252-225-116		
250	0,069	150	175	2,1	252-250-116		
275	0,059	120	193	2,3	252-275-116		
300	0,052	100	210	2,4	252-300-116		
315	0,048	90	221	2,6	252-315-116		
325	0,046	85	228	2,8	252-325-116		
350	0,04	75	245	3,3	252-350-116		
375	0,036	65	263	3,5	252-375-116		
400	0,033	55	280	3,8	252-400-116		
450	0,027	45	360	4,2	252-450-116		
500	0,023	35	400	4,7	252-500-116		
550	0,02	30	440	5,3	252-550-116		
600	0,017	25	480	5,9	252-600-116		
700	0,014	20	560	6,9	252-700-116		
800	0,011	16	640	7,6	252-800-116		
900	0,009	12	720	8,2	252-900-116		

All data refers to a media and ambient temperature of +20 °C

* refers to the inside of the hose

Order-specific production in above listed sizes and lengths of 3m or 6m, available within 48 hrs on request.

Available on request in other lengths, sizes, colours, spiral intervals, with stainless steel spirals.

Subject to technical changes and colour deviations.